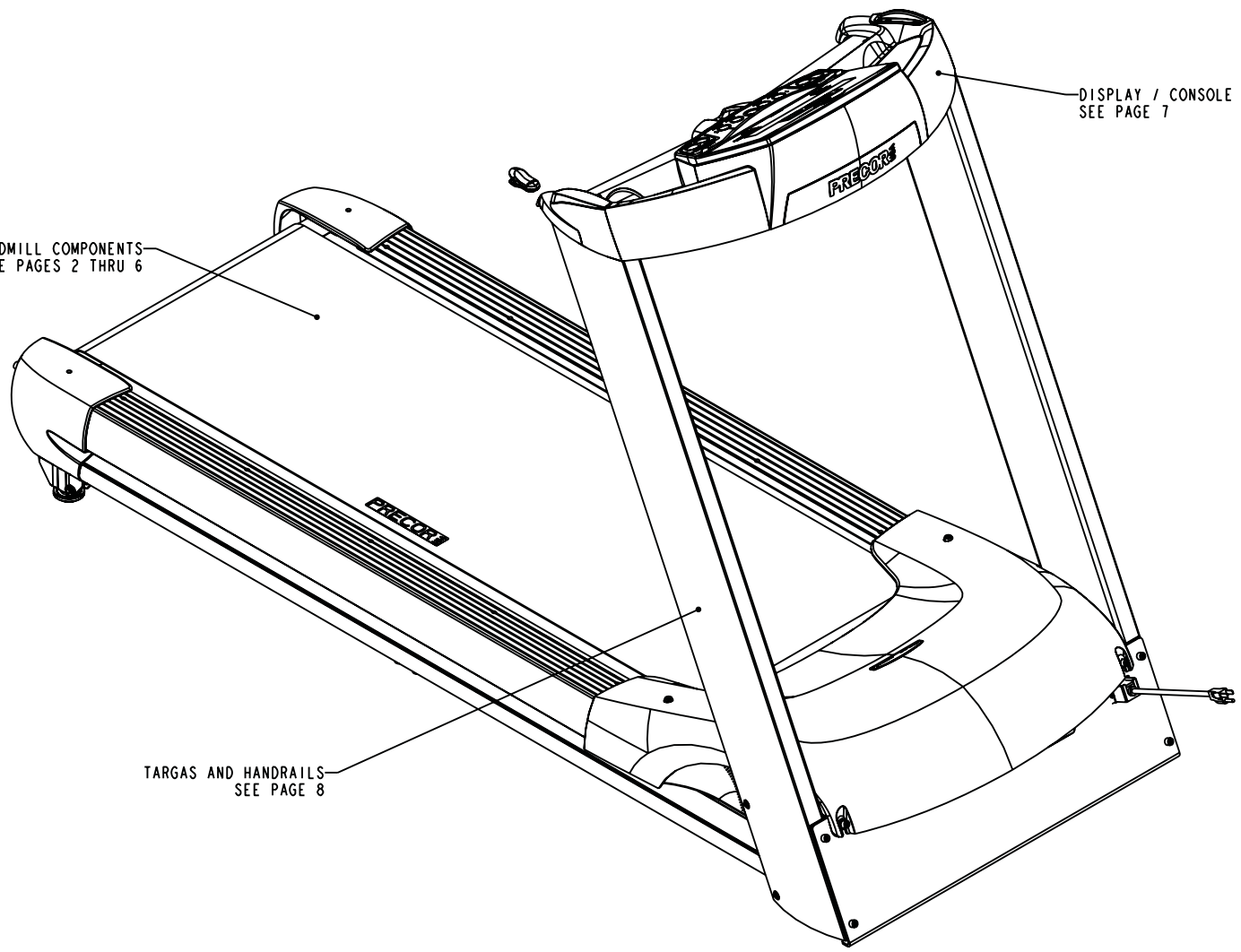


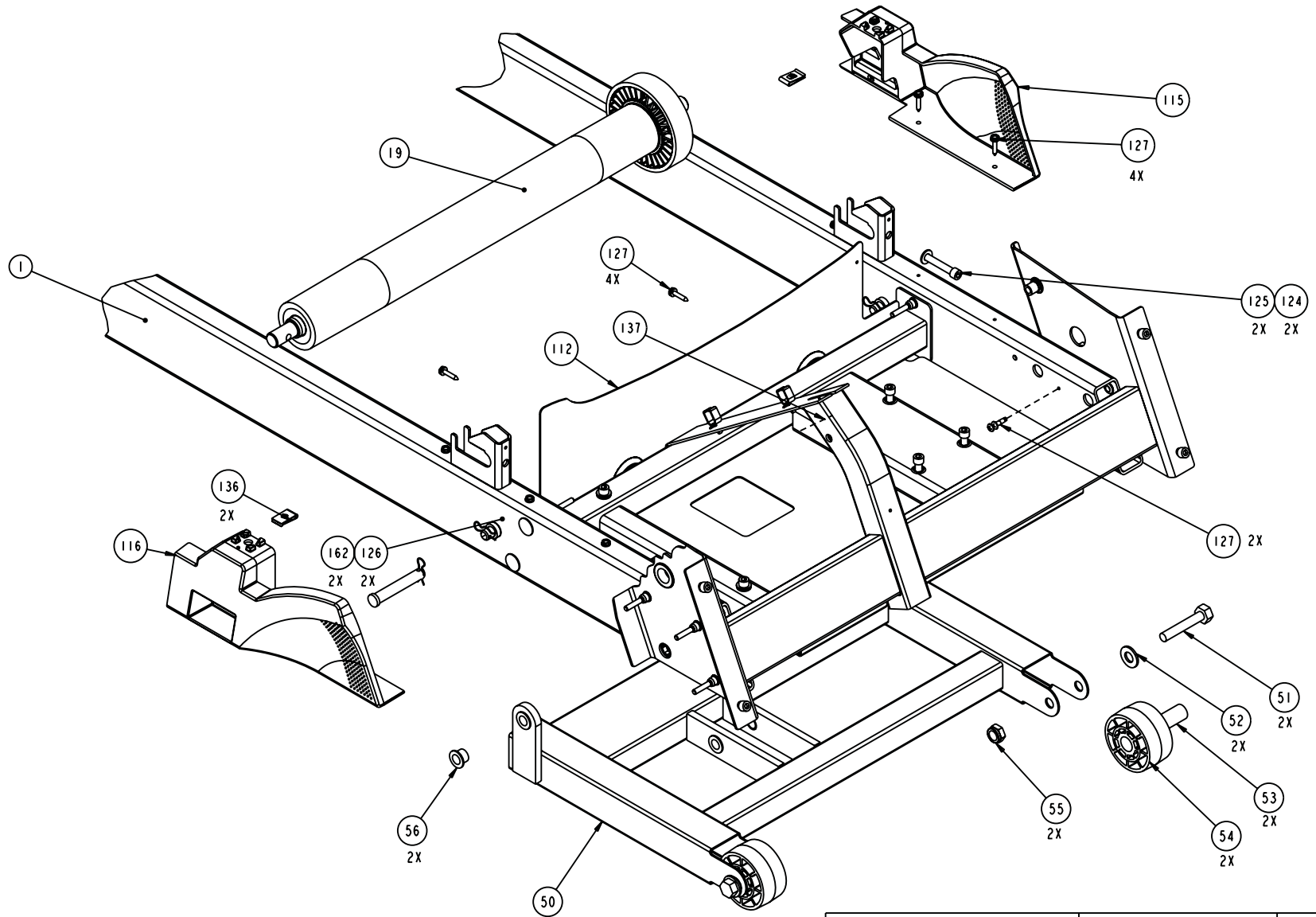
LOWER TREADMILL COMPONENTS
SEE PAGES 2 THRU 6

DISPLAY / CONSOLE COMPONENTS
SEE PAGE 7

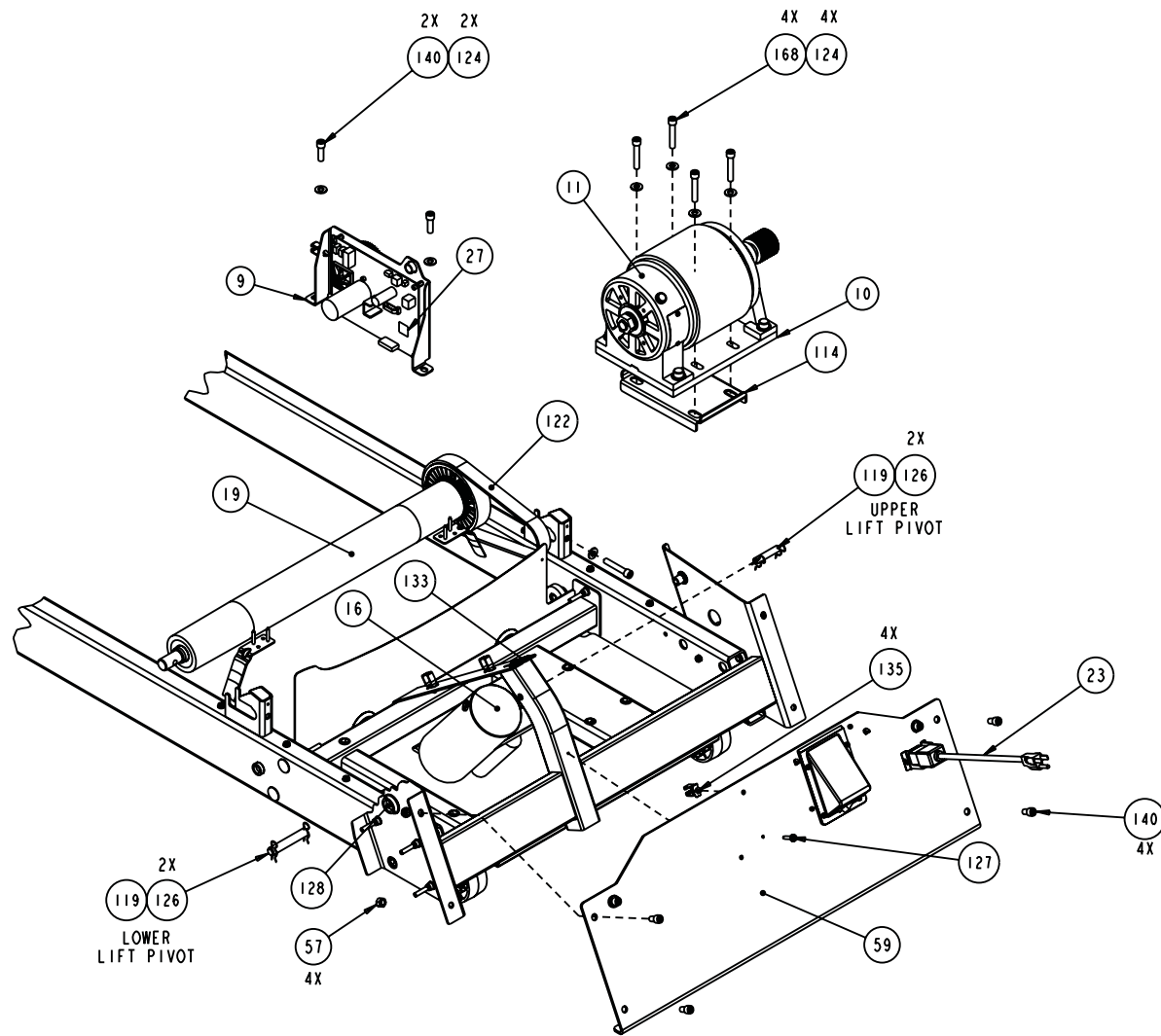
TARGAS AND HANDRAILS
SEE PAGE 8



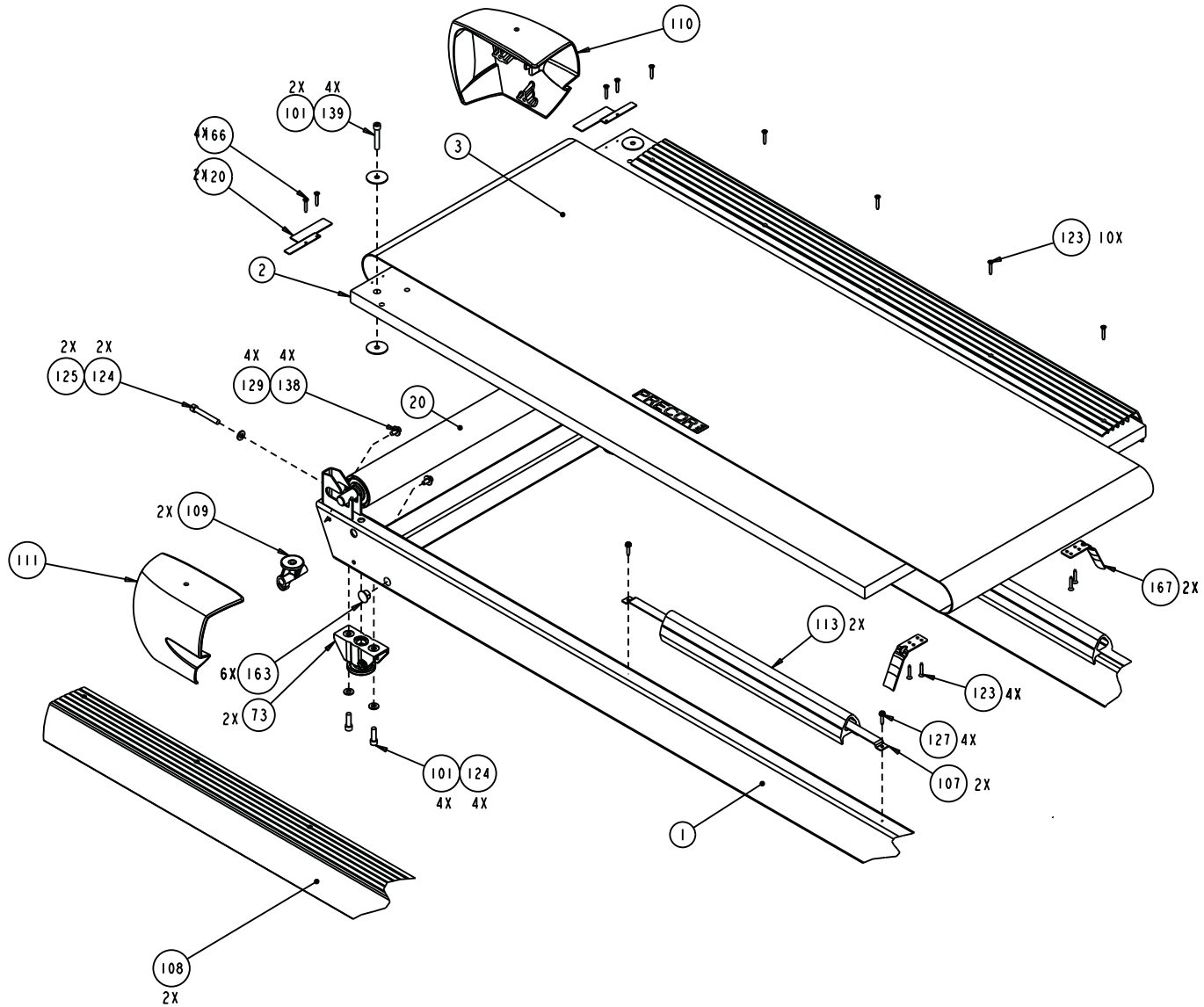
C932	P/N 45732-101	REV: T02
DRAWN BY: C THOMSON	DATE: 02.22.06	SHEET 1 OF 8



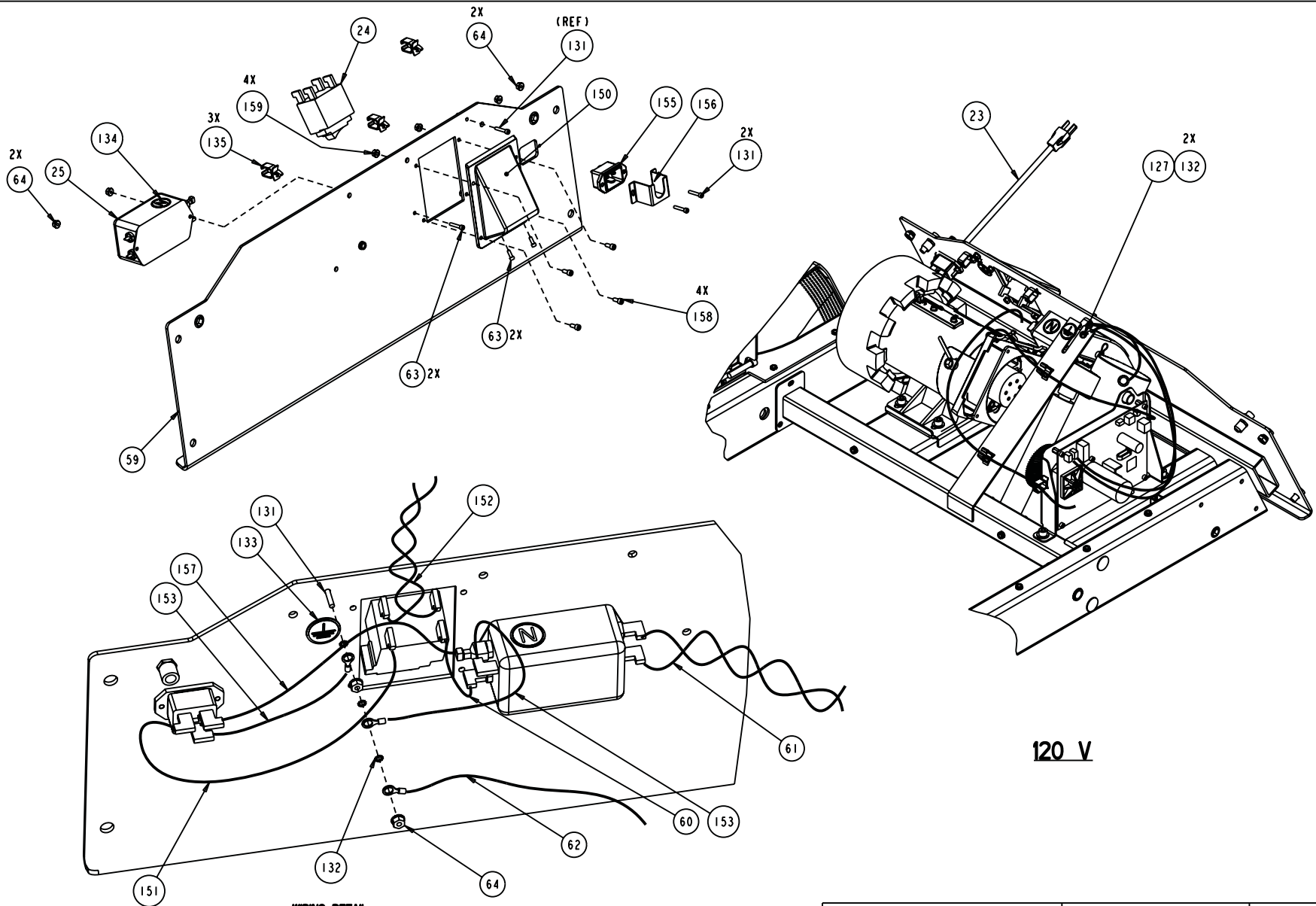
C932	P/N 45732-101	REV: T02
DRAWN BY: C THOMSON	DATE: 02.22.06	SHEET 2 OF 8



C932	P/N 45732-101	REV: T02
DRAWN BY: C THOMSON	DATE: 02.22.06	SHEET 3 OF 8



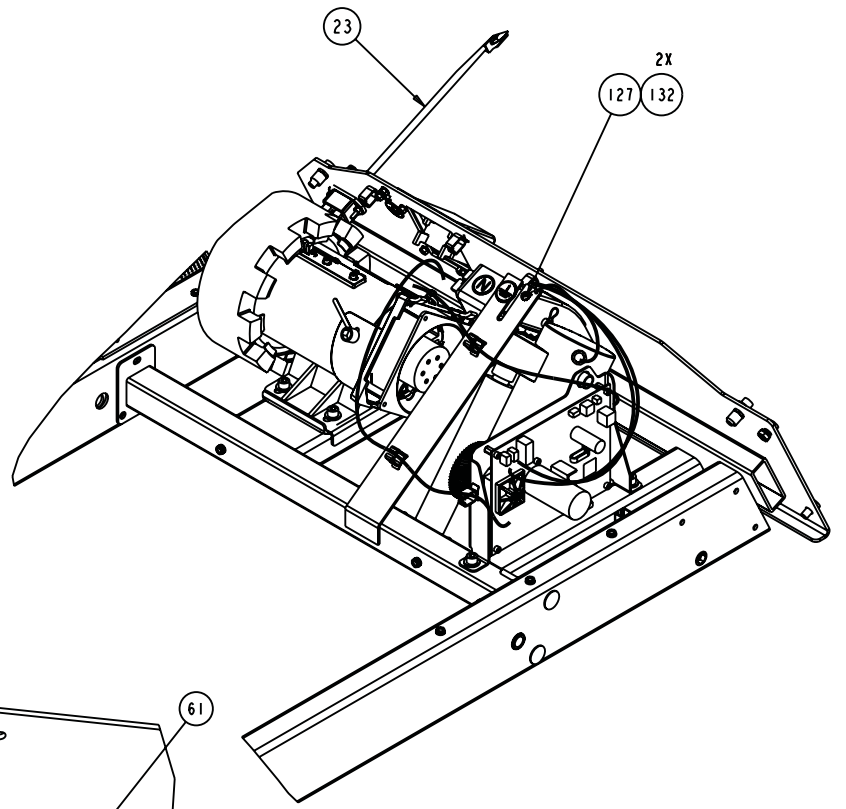
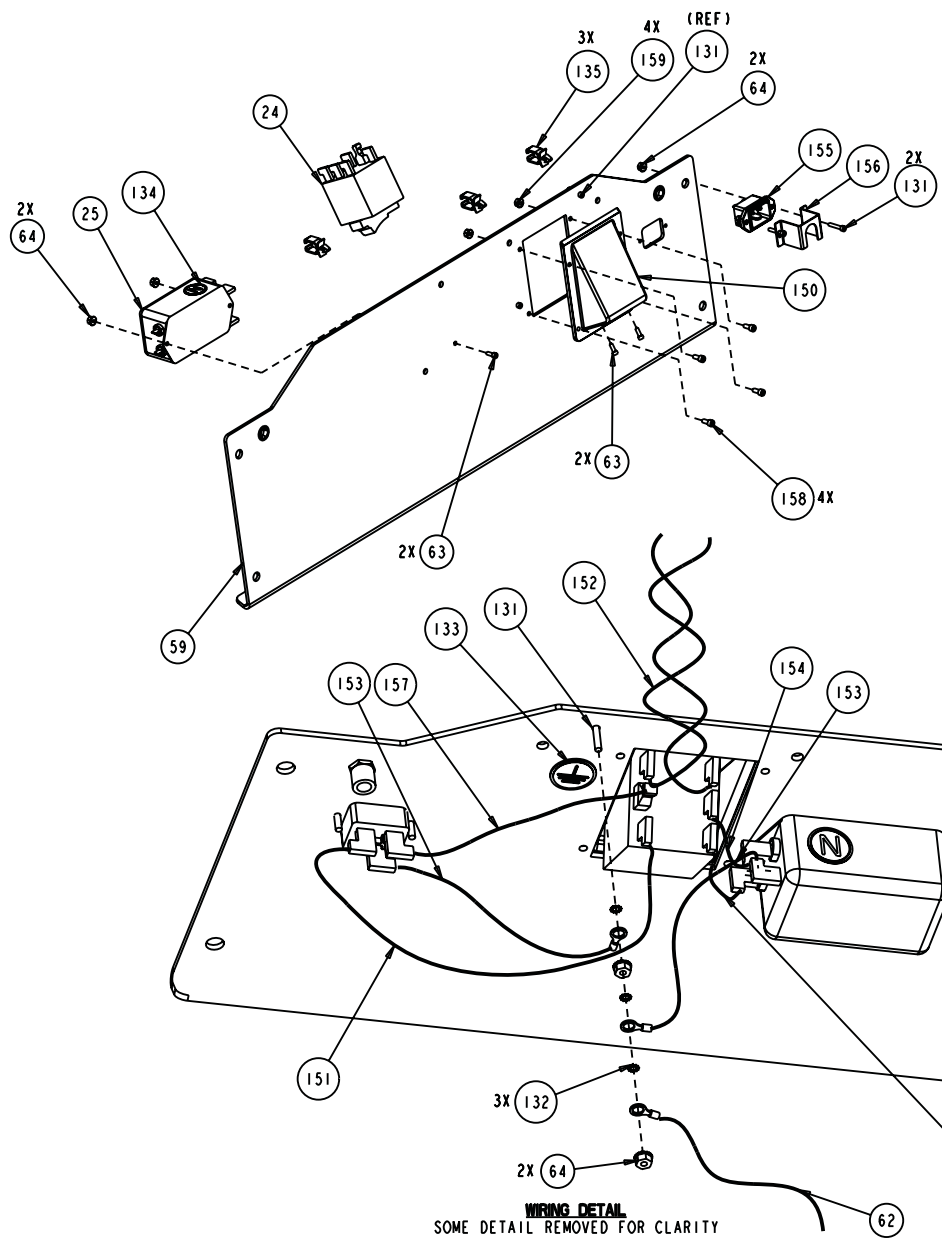
C932	P/N 45732-101	REV: T02
DRAWN BY: C THOMSON	DATE: 02.22.06	SHEET 4 OF 8



WIRING DETAIL
 SOME DETAIL REMOVED FOR CLARITY

120 V

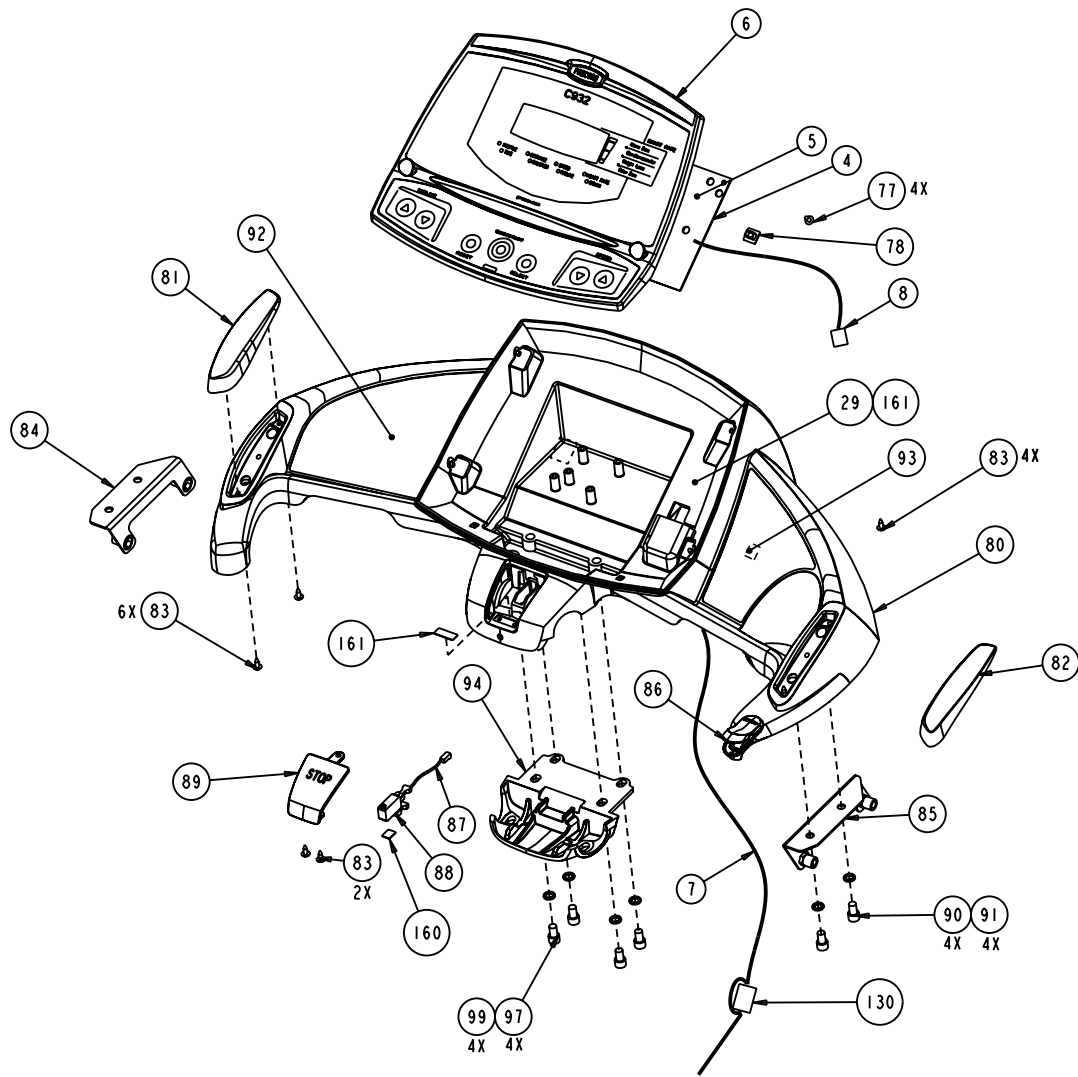
C932	P/N 45732-101	REV: T02
DRAWN BY: C THOMSON	DATE: 02.22.06	SHEET 5 OF 8



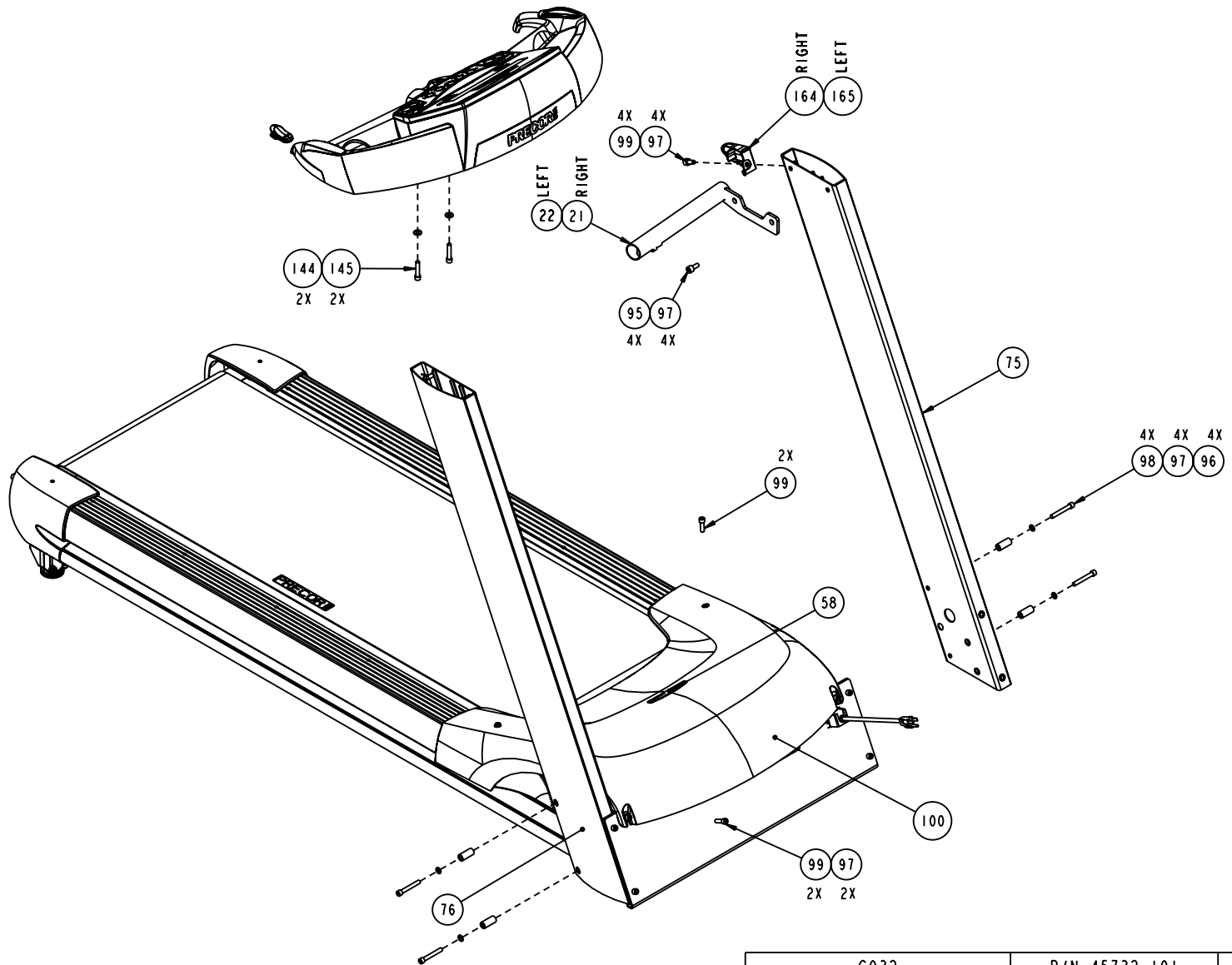
240 V

WIRING DETAIL
SOME DETAIL REMOVED FOR CLARITY

C932	P/N 45732-101	REV: T02
DRAWN BY: C THOMSON	DATE: 02.22.06	SHEET 6 OF 8



C932	P/N 45732-101	REV: T02
DRAWN BY: C THOMSON	DATE: 02.22.06	SHEET 7 OF 8



C932	P/N 45732-101	REV: T02
DRAWN BY: C THOMSON	DATE: 02.22.06	SHEET 8 OF 8

C932 (240 VAC)(serial code WZ, Y1)

Part Number	Description	Bubble Number
PPP00000044022101	ASSEMBLY, MAIN FRAME	1
PPP00000059093101	DECK WITH SHIPPER KIT	2
PPP00000036355122	RUNNING BELT, SIEGLING, 120 X 20 W/	3
PPP00000048866101	ASSY, UPCA & SW, C932, TD,W/CSAFE P	4.01
PPP00000047724101	ASSEMBLY, DISPLAY,EN,C932,TD	6
PPP00000044905084	ASSY,CBL,MOD,8P8C,1-1,SILVER,84"	7
PPP00000044905012	ASSY,CBL,MOD,8P8C,1-1,SILVER,12"	8
PPP00000045861104	ASSY, LOWER ELECTRONICS, C93X-T3/TD	9
PPP00000059070106	KIT, ASSY, DRIVE MOTOR,240V, C93X,	10.01
PPP00000020108101	ASSY, SPEED SENSOR, CHI-HUA MOTOR	11
PPP00000044064106	LIFT ACTUATOR, 240V	16
PPP00000047101101	ASSEMBLY, DRIVE ROLLER, STEEL	19
PPP00000047102101	ASSEMBLY, TAKE-UP ROLLER, STEEL	20
PPP00000044179101	WELDMENT, HANDLEBAR, M9.31, LEFT, P	21
PPP00000044179102	WELDMENT, HANDLEBAR, M9.31, RIGHT,	22
PPP00000045659144	PWR CORD,250VAC,20A,NEMA 6-20RA/IEC	23
PPP00000045660144	PWR CORD,250VAC,16A,CEE 7/7RA - IEC	23.01
PPP00000045429144	PWR CORD,13A,BS 1363 - IEC,	23.02
PPP00000010738102	CKT BRKR,250V,MAGNETIC,ROCKER,	24
PPP00000011224102	FILTER,PWR LINE,250VAC,16A	25
PPP00000044569302	IC, CPU, PGMD, 9.3X, LOWER, V3.02,	27
PPP00000059095102	UPGRADE KIT, LOWER FIRMWARE 3.02V,	27.01
PPP00000011415102	COUPLER,MOD,8P8C,INLINE,SNAP-IN	29
PPP00000045904101	LIFT PLATFORM, W/BUSHINGS, 9.3X, C9	50
PPP00000HCTN050250	SCREW,HEX,GR 5,1/2-13X2-1/2,BLK SHA	51
PPP00000WBZN050008	WASHER, FLAT,1/2,.086 BLK CVS	52
PPP00000036192101	BUSHING, SPANNER	53
PPP00000044270101	WHEEL, LIFT	54
PPP00000KACN050019	LOCKNUT,HALF,1/2-13,ZN	55
PPP000000010043113	BEARING,FLANGE,OD=.62 ID=.5	56
PPP00000KMCN031023	NUT, HEX, 5/16-18, ZINC	57
PPP000000044152101	LABEL, GROUND EFFECTS	58
PPP000000045667101	9.3X, C936I FACEPLATE W/RIVNUTS	59
PPP000000044528006	ASSY,CBL,1 COND,14AWG,QK DISC,6",BR	60
PPP000000045268030	CBL,2C(1TW PR),BROWN/BLUE,250X032 Q	61
PPP000000045145016	CBL,1C,14AWG,#10 RING(2X),GRN/YEL,1	62
PPP00000CCNN013038	SCREW, SKHD,6-32X3/8,SS,LK	63
PPP00000KGCN013011	LOCKNUT, STARWASHER 6-32, #6	64
PPP000000044019105	ASSEMBLY, REAR FOOT, M9.3X	73
PPP000000044017103	ASSEMBLY, TARGA, LEFT	75
PPP000000044017104	ASSEMBLY, TARGA, RIGHT	76
PPP00000PGKN016050	SCREW,S/T,#8X1/2,TRS,PHIL,BLK	77
PPP000000044065102	DASH, CHARCOAL GRAY	80
PPP000000044105101	HAND GRIP, CONSOLE, LEFT	81
PPP000000044105102	HAND GRIP, CONSOLE, RIGHT	82
PPP00000PGKN016050	SCREW,S/T,#8X1/2,TRS,PHIL,BLK	83
PPP000000044026101	ASSY,MOUNTING BRACKET,LEFT	84
PPP000000044026102	ASSY,MOUNTING BRACKET,RIGHT	85
PPP000000045283011	ASSY,CBL,UPPER SAFETY SWITCH,11"	87
PPP000000012259102	SWITCH,MICRO,PLUNGER,SPNC	88
PPP000000044086102	STOP BUTTON	89
PPP00000CATN031050	SCREW,SKHD,5/16-18X0.50,BLK SHARPER	90
PPP00000WEGN031007	WASHER, FLT, 5/16X.688X.065,SS, BLK	91

C932 (240 VAC)(serial code WZ, Y1)

Part Number	Description	Bubble Number
PPP00000045688101	LABEL, DASH, LEFT,EN,C932	92
PPP00000045689101	LABEL, DASH, RIGHT,EN, C932	93
PPP00000044112102	BRACKET, HANDRAIL CLAMP	94
PPP00000CCNE031100	SCREW,SKHD,5/16-18X1.00,SS,LK	95
PPP00000044060102	SPACER, TARGA BOLT, 1.360L	96
PPP00000WPNN033005	WASHER,FLT,5/16X.562X..060,SS	97
PPP00000CCNN031225	SCREW,SKHD,5/16-18X2.25,BLK ZN,LK	98
PPP00000CCNE031075	SCREW,SKHD,5/16-18X.75,SS,LK	99
PPP00000045451101	ASSEMBLY, HOOD W/ WIRING DIAGRAM	100
PPP00000CATN031175	SCREW,SKHD,5/16-18X1.75,BLK SHARPER	101
PPP00000044074105	STRAP, GFX TIE DOWN	107
PPP00000044082103	TRIM, BED, CHARCOAL GRAY	108
PPP00000044071104	PIVOT, DECK MOUNT	109
PPP00000046882101	ASSY, ENDCAP, LEFT, PT	110
PPP00000046882102	ASSY, ENDCAP, RIGHT, PT	111
PPP00000044089103	ENCLOSURE, LOWER	112
PPP00000044092102	CUSHION, GFX	113
PPP00000044097102	PLATE, MOTOR	114
PPP00000044102105	VENT, HOOD, LEFT	115
PPP00000044102106	VENT, HOOD, RIGHT	116
PPP00000044109103	PIN, LIFT PIVOT, 3.38	118
PPP00000044109102	PIN, LIFT PIVOT, 2.00	119
PPP00000049429101	93X ROLLER BRIDGE, LEFT, PT	120
PPP00000049429102	93X ROLLER BRIDGE, RIGHT, PT	120.01
PPP00000010217132	BELT, DRIVE, 280J10 POLY V, TEM	122
PPP00000WBCN031007	WASHER,FLT,5/16X.688X.065, ZN	124
PPP00000CATN031225	SCREW,SKHD,5/16-18X2.25,BLK SHARPER	125
PPP00000010400103	PIN, HITCH, .093 DIA, ZINC, #203	126
PPP00000PKCN019075	SCREW,S/T,#10X.75,WSHHXHD,ZN	127
PPP000000010178107	BUSHING, SNAP	128
PPP00000CATN025050	SCREW,SKHD,1/4-20X0.50,BLK SHARPERI	129
PPP00000CCNN013075	SCREW,SKHD,6-32X.75L,SS	131
PPP00000WAMCN019002	WASHER, LOCK, EXT TOOTH, #10	132
PPP000000033984101	LABEL, SAFETY, GROUND SYMBOL	133
PPP000000037436101	LABEL, CHASIS NEUTRAL	134
PPP000000011278101	CABLE CLAMP,INSERT	135
PPP000000010136107	NUT RETAINER,TINNERMAN, 5/16-18	136
PPP000000045784101	GROMMET, LIFT MOTOR MOUNT, 9.3X	137
PPP00000WNKN034007	WASHER, FLT, 5/16X.500X.065,BLK ZN	138
PPP00000WABCN031006	WASHER, FEN, 5/16, ID=.331,	139
PPP00000CATN031100	SCREW,SKHD,5/16-18X1,BLK SHARPERIZE	140
PPP00000CCNN031125	SCREW, SKHD, 5/16-18 X 1.25, SS	144
PPP00000WBCN031007	WASHER,FLT,5/16X.688X.065, ZN	145
PPP00000WEGN031007	WASHER, FLT, 5/16X.688X.065,SS, BLK	145
PPP000000044118102	BRACKET, POWER BOX	150
PPP000000044528010	CBL,1C,14AWG,250X032 QD RECP FLAG(X	151
PPP000000044532036	ASSY,CBL,2 COND,22AWG,MOLEX,36"	152
PPP000000044534008	ASSY,CBL,1COND,14AWG,QK DISC,8"	153
PPP000000045327006	CBL,1C,14AWG,250X032 QD RECP FLAG(X	154
PPP000000045381101	IEC 16/20A POWER CORD INLET	155
PPP000000047027102	POWER CORD CLAMP, SHORT.	156
PPP000000045383012	CBL,1C,14AWG,250X032 QD RECP/250X03	157
PPP00000CATE016038	SCREW,SKHD, #8-32 X 3/8,BLK SHARPER	158

C932 (240 VAC)(serial code WZ, Y1)

Part Number	Description	Bubble Number
PPP00000KGCN016013	LOCKNUT, STARWASHER 8-32, HEX	159
PPP000000044170101	VHB, SPACER, SHORT	160
PPP000000044171101	VHB, SPACER, LONG	161
PPP000000045669101	PIN, LIFT PIVOT, 3.16, MUSHROOM HEA	162
PPP000000010114108	PLUG,.625 DIA, DOUBLE D	163
PPP000000044172102	CAP, HANDRAIL, RIGHT, CHARCOAL GRAY	164
PPP000000044172101	CAP, HANDRAIL, LEFT, CHARCOAL GRAY	165
PPP000000042452102	BELT TRACKER	167
PPP00000HCCN031125	SCREW,HEX,GR 5,5/16-18X1.25,ZN	168
PPP000000044135104	HARDWARE KIT, 9.3X	200
PPP000000020002112	BRUSH, MOTOR (YP00521)	202
PPP000000010186111	WRENCH, ALLEN, 1/4, 3 X 10	204
PPP000000011075020	FUSE,200MA,250VAC,SLOW,RADIAL	205
PPP000000011075102	FUSE,1.00A,250VAC,SLOW,RADIAL	206
PPP000000011075105	FUSE,2.00A,250VAC,SLOW,RADIAL	207
PPP000000044165105	LABEL, WIRING DIAGRAM	209
PPP000000059054101	9.3X, C93X ENDCAP REPLACEMENTKIT	210
PPP000000059060101	9.3X BELT TRACKER KIT	215
PPP000000059123102	KIT, FAN MOUNTING, C93X, 240V	220
PPP000000045731105	LITERATURE KIT,C932	999